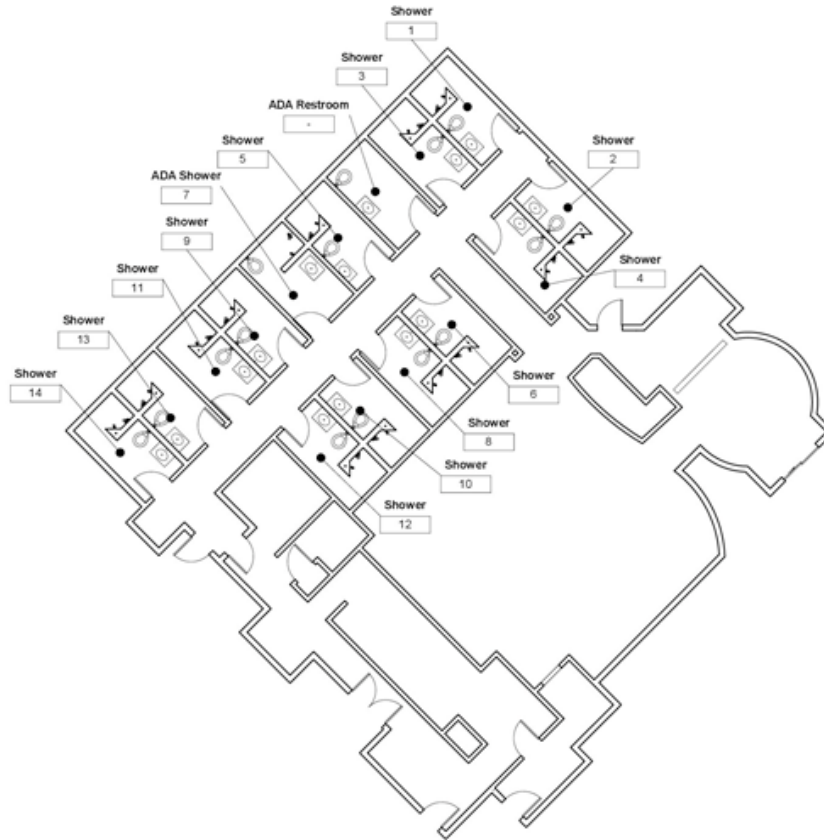
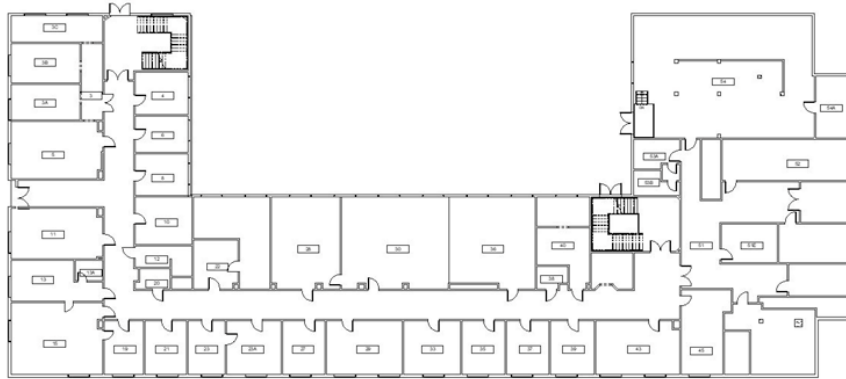


Indoor Reality Revit Plug-In



- Acquisition device: handheld
- Area: 4000 square feet
- Acquisition time: 30 minutes
- Automated processing time: 1 hour
- Human interaction time to generate Revit model: 5 hours



Basement

- Area: 25,000 square foot
- Acquisition time: 37 minutes
- Automated processing time: 5 hours
- Human Interaction time to generate Revit model: 8 hours